

Research Paper



Study of the release of agricultural sulfur and sulfur associated with natural gas under the influence of different temperatures, incubation times and soil texture

Musadaq Ali Yaqoob Al-Jasim^{1*}, Mohammad Malik Yassin², Rashad Adel Omran³

^{1*,2,3}Department of Soil Sciences and Water Resources-College of Agriculture-University of Basrah, Iraq.

Article Info

Article History:

Received: 21 September 2023

Revised: 30 November 2023

Accepted: 08 December 2023

Published: 25 January 2024

Keywords:

Dissolved Sulfur

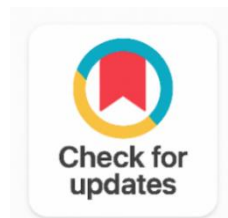
Agricultural Sulfur

Associated with Natural Gas

Temperatures

Incubation Periods

Soil Fertility



ABSTRACT

laboratory experiment was carried out to study the effect of temperature (25, 35, and 45 °C) and incubation duration (15, 30, 45, 60, 90, and 120 days) with the addition of two sulfur sources (agricultural sulfur and sulfur associated with natural gas) at a level of 2000 mg S kg⁻¹ in dissolved sulfur soil concentration in sandy loam and clay loam soils, with choosing the best temperature to be applied in the kinetic model of sulfur in soil. The temperature and incubation duration results indicated an increase in dissolved sulfur in the agricultural sulfur treatment in both study soils. Also, the 35 °C treatment gave the highest dissolved sulfur compared to the other temperatures, and the incubation period of 120 days recorded the highest amount of dissolved sulfur released. The dual interaction treatment of the sandy loam soil at a temperature of 35 °C and the fertilizer source (agricultural sulfur) gave the largest values of dissolved sulfur in the soil solution, which reached 12.60 mmol S L⁻¹. While clay loam soil at a temperature of 35 °C gave agricultural sulfur the highest values, amounting to 30.68 mmol S L⁻¹.

Corresponding Author:

Musadaq Ali Yaqoob Al-Jasim

Department of Soil Sciences and Water Resources-College of Agriculture-University of Basrah, Iraq.

Email: musadaqwrood@gmail.com

Copyright © 2024 The Author(s). This is an open access article distributed under the Creative Commons Attribution License, (<http://creativecommons.org/licenses/by/4.0/>) which permits unrestricted use, distribution, and reproduction in any medium, provided the original work is properly cited.

1. INTRODUCTION

Sulfur is an important element in complete and balanced nutrition for crops and has gained more prominent attention in recent years because it is considered the fourth essential nutrient for plant growth

after nitrogen (N), phosphorus (P), and potassium (K). Crops need it in quantities similar to phosphorus and magnesium [1], as sulfur plays an important role in the vital functions of plants. Its importance is evident through its participation in multiple metabolic processes. It is also necessary for the synthesis of amino acids such as cysteine, cystine, and methionine, and it has an important role in the formation of CoASH, vitamins, and the formation of Ferredoxin, which is a powerful reducing agent [2]. It is one of the components of the electronic transport chain for light reactions in the process of photosynthesis, and sulfur is also involved in creating defense mechanisms in plants against pests and diseases and tolerance to drought and pollution with heavy metals [3], [4]. (Sulfur needs to be oxidized to sulfate to be available for plants by various groups of soil microorganisms, most notably genera of Bacteria Thiobacillus sp., and this process is affected by environmental conditions and the physical and chemical properties of the soil, which affect the microorganism groups in it [4], [5]. The oxidation of sulfur in the soil depends mainly on the chemical composition of the fertilizer, the degree of its decomposition, the time of addition, the abundance of microbial groups, and some physical and chemical soil properties such as soil texture, temperature, soil moisture, content and type of organic matter, and soil pH, which affect the release and release of sulfur in the soil [6], [7], [8].

Global sulfur resources were estimated at 25×10^9 tons, of which 4.0% was elemental sulfur, 4.1% in sulfide ores, 83.6% in coal, 3.0% in crude oil, and 5.3% in natural gas [9], and the estimated reserve represents from the sulfur deposits in Iraq are the largest known reserve in the world, ranging between 250-100 million tons of sulfur [5]. Through good management of this element and its use in agricultural techniques, environmental pollution resulting from sulfur emissions associated with extraction operations can be eliminated. oil and gas [10], [11].

2. METHODOLOGY

Soil samples were collected randomly and in composite samples at the end of October 2021 from the surface layer, 0-30 cm from two sites with different characteristics in Basra Governorate, the first in the Al-Barjisiyah area (Ts) with coordinates $30^{\circ}22'02.5''N$ $47^{\circ}34'24.2''E$ and the second in the Medina district (Tc) with coordinates $30^{\circ}56'39.9''N$ $47^{\circ}11'09.5''E$. Soil samples were brought to the laboratory, air-dried, then ground and passed through a sieve with a diameter of 4 mm to study some physical properties of the soil according to [1], Table 1 and some chemical properties of the soil according to [6], [12], Table 2.

Table 1. Some Physical Properties of the Two Study Soils

Soil Symbol	PH	EC dsm ⁻¹	Dissolved Ions in Soil Solution							
			Ca ²⁺	Mg ²⁺	Na ⁺	K ⁺	SO ₄ ²⁻	Cl ⁻	CO ₃ ⁻	HCO ₃ ⁻
			mmol L ⁻¹							
Ts	7.93	2.71	5.62	4.23	4.48	0.59	0.98	18.27	0.00	2.45
Tc	7.79	8.63	8.46	7.79	48.22	3.27	12.42	52.35	0.00	5.19

Table 2. Some Chemical Properties of the Two Study Soils

Soil Symbol	CEC cmol + Kg ⁻¹	Organic Carbon	Organic Matter	CaCO ₃	Ions Available in the Soil			
					N	P	K	S
					mg Kg ⁻¹ soil			
Ts	7.41	3.54	6.10	169.16	1.12	8.09	39.58	48.85
Tc	23.47	24.71	42.60	445.28	21.62	13.68	197.23	454.58

Agricultural sulfur fertilizer produced by the Mishraq Sulfur General Authority and associated with natural gas produced by R.S.K. Company was used [13]. Some characteristics of the sulfur sources were estimated in the Department of Physics/College of Science/University of Basrah using Field-emission

scanning electron microscope (FE-SEM) (High-resolution imaging Technology) type Nova NanoSEM 450 and Figure 1 and Figure 2.

Table 3. Chemical Analysis of the Two Sulfur Sources Used in the Study

Sulfur Sources	Sulfur	Carbon	Oxygen	Sodium	Silicon	Mercury
	%					
Agricultural Sulfur	98.33	1.67	-	-	-	-
Sulfur Associated With Natural Gas	85.56	1.75	6.38	1.42	2.12	2.77

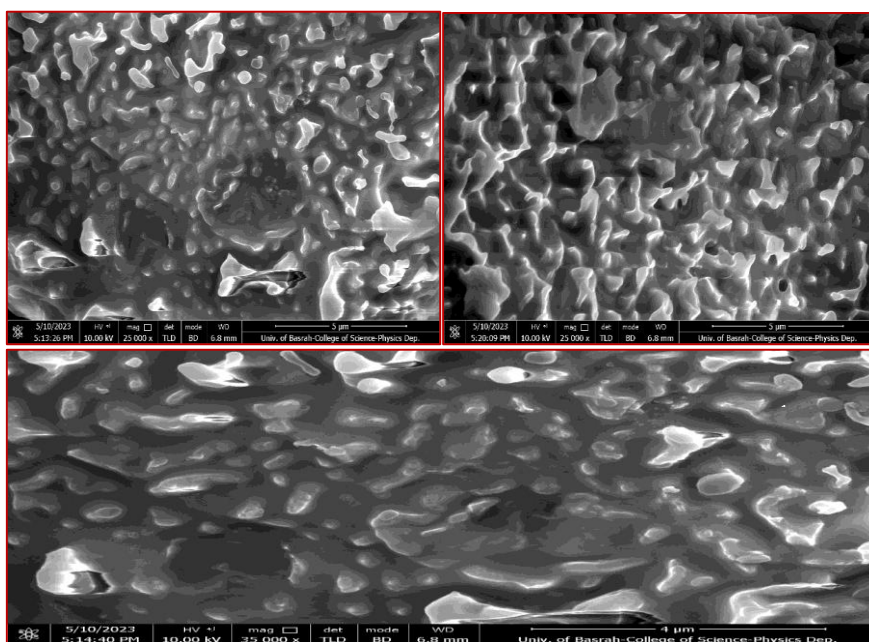


Figure 1. The High-Resolution Imaging using an FE-SEM Scanner for Agricultural Sulfur

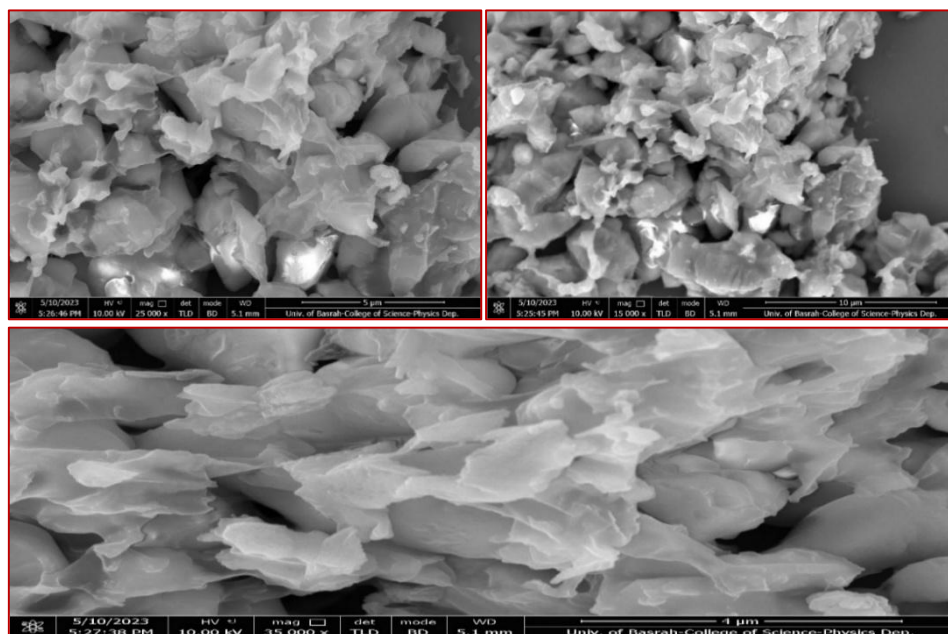


Figure 2. The High-Resolution Imaging using an FE-SEM Scanner for Sulfur Associated with Natural Gas

The laboratory experiment included studying the effect of two sources of sulfur (agricultural sulfur Sa and sulfur associated with natural gas Sg), soil texture (sandy loam Ts and clay loam Tc), temperature

25, 35 and 45 °C with incubation periods of 15, 30, 45, 60, 90 and 120 days on Concentration of dissolved sulfur in the soil solution by adding a sulfur level of 2000 mg S kg⁻¹ soil and irrigating the soil to the field capacity limits throughout the incubation period [14]. After the end of each incubation period, the dissolved sulfur in the soil was estimated to choose the temperature that best describes the release of sulfur [15].

The experiments were conducted with three replicates as a factorial experiment and in a completely randomized design (CRD) using analysis of variance through the statistical program SPSS V.23. The averages of the coefficients were compared using the least significant difference (RLSD) at the probability level of 0.05.

3. RESULTS AND DISCUSSION

The results showed the effect of the sulfur source on the dissolved sulfur in the soil solution under the two soils of the study Figure 3. Agricultural sulfur was significantly superior ($P > 0.05$) compared to the sulfur associated with the gas in both soils of the study. The percentage of superiority was close in both soils, around 7%, and this is due to the effect of the general characteristics of the sulfur source, such as variation in the sizes of sulfur particles and their surface area exposed to the activity of sulfur-oxidizing organisms and Figure 1 and Figure 2, this is consistent with the findings of [2] that the process of sulfur oxidation depends on the shape and size Sulfur particles added to the soil.

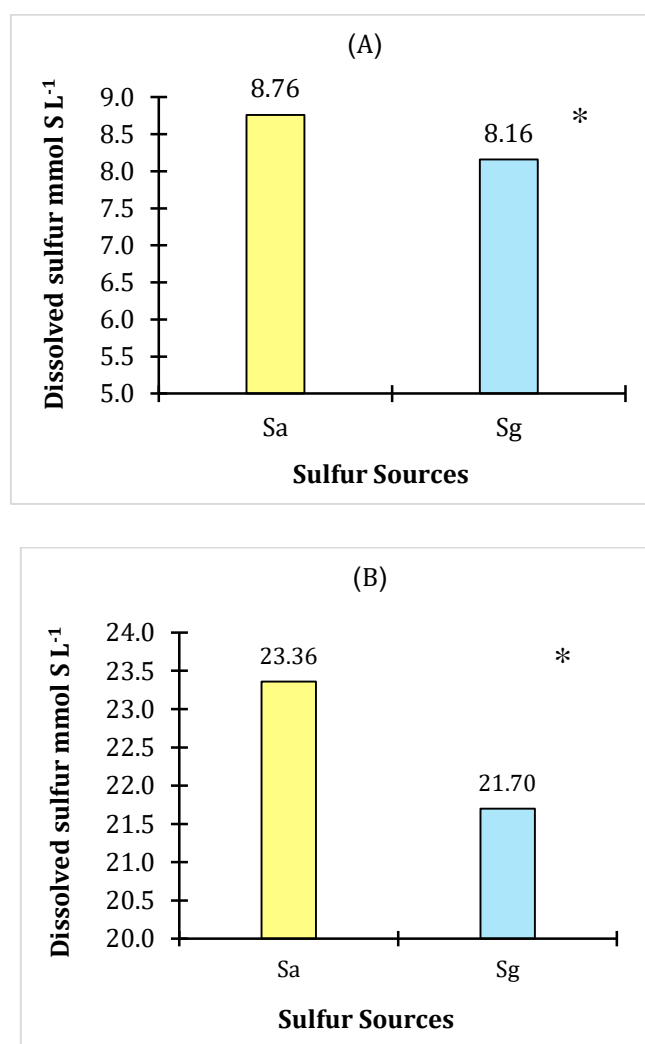


Figure 3. The Effect of the Sulfur Source on the Rate of Dissolved Sulfur in the Soil: A) Sandy Loam and B) Clay Loam

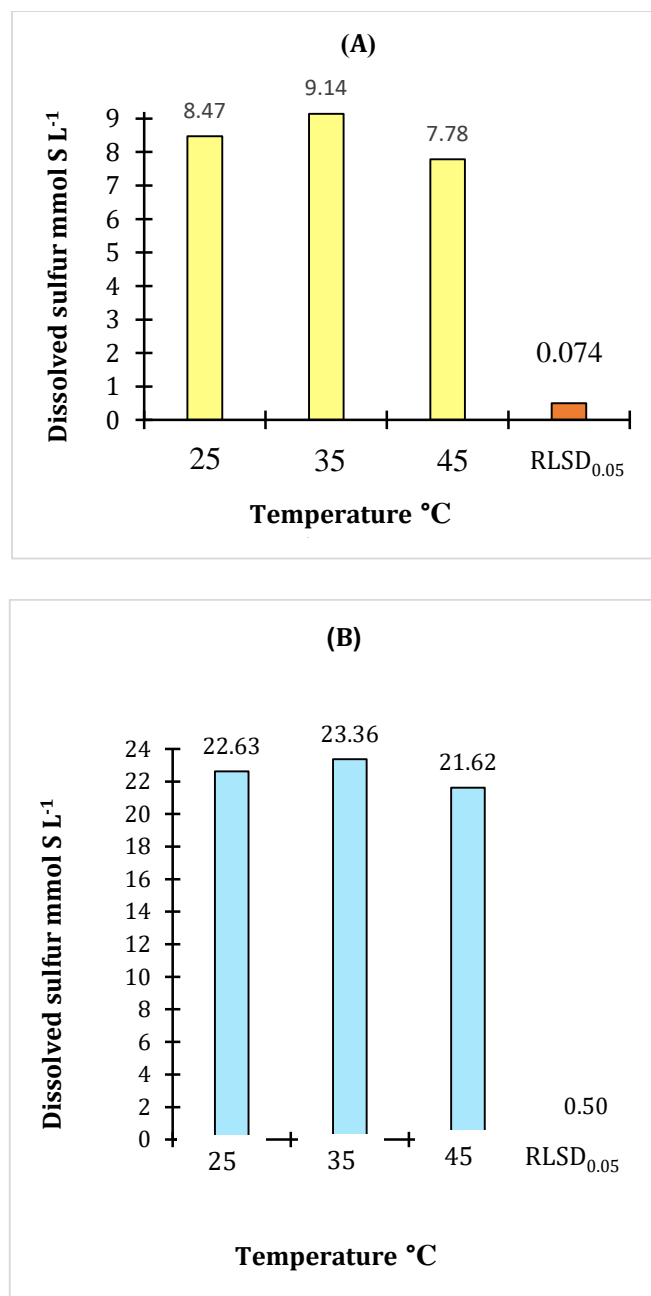


Figure 4. The Effect of Temperature on the Rate of Dissolved Sulfur in the Soil: A) Sandy Loam B) Clay Loam

Figure 5 shows that there is a significant increase in the concentration of sulfur in both soil textures with time, as the dissolved amount of sulfur increased by 162.87% and 88.62% for the sandy loam and clay loam soils, respectively, after 60 days of incubation period compared to the 15-day incubation period, then the percentage of increase decreased. After 90-120 days of incubation, compared to a period of 60 days, especially in sandy loam soil. The reason for the increase in sulfur concentration over time is the availability of a sufficient amount of organic matter on which microorganisms work, thus an increase in the activity and work of organisms in oxidation and the availability of sufficient time for that. The reason for the decrease in the increase the expulsion after that may be due to a decrease in the activity of sulfur-oxidizing microorganisms due to the continuous consumption of organic matter in the soil and increased competition among them [9].

Figure 4 shows the difference in the effect of temperature on the rate of dissolved sulfur in the two study soils.

The concentration of dissolved sulfur increased significantly at a temperature of 35 °C compared to a temperature of 25 °C, reaching 23.36 and 22.63 mmol S L⁻¹ in the clay loam soil and 9.14 and 8.47 mmol S L⁻¹, respectively, in the soil. sandy loam sand, we find that the sulfur concentration subsequently decreased to 21.62 and 7.78 mmol S L⁻¹ at a temperature of 45 °C for both soils, respectively. This is because the sulfur oxidation process is mainly a biological process that depends on the activity of sulfur-oxidizing microorganisms. These microorganisms have an optimum temperature at which they can operate with maximum effectiveness. Therefore, we find that the temperature of 35 °C represents the appropriate temperature for the activity of these microorganisms, and it is behind the increase in oxidation at this temperature [8].

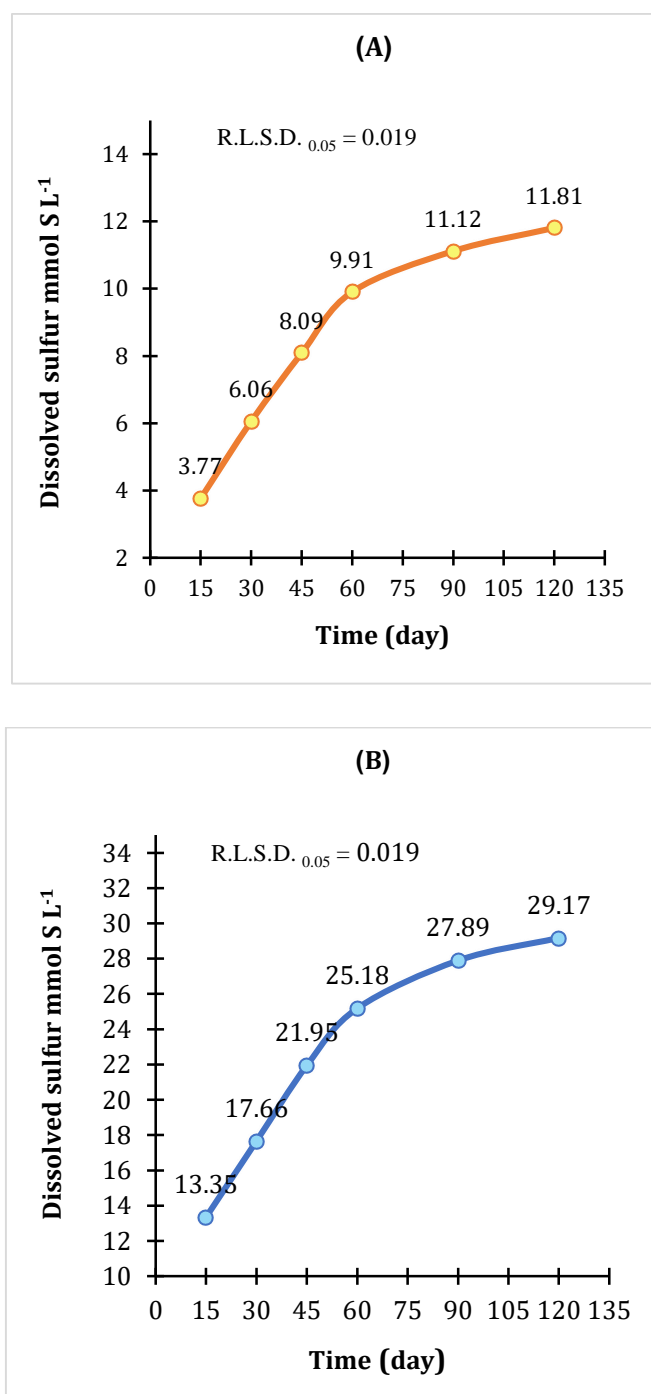


Figure 5. The Effect of Incubation Duration on the Rate of Concentration of Dissolved Sulfur in the Soil A) Sandy Loam B) Clay Loam

Figure 6 indicates that there are statistical differences ($P > 0.05$) for the binary interaction between the sulfur source and the temperature for both soil textures in the average concentration of dissolved sulfur, as the SA treatment at a temperature of 35 °C recorded the highest values, reaching 9.48 and 24.09 mmol S L⁻¹ for the two soil textures. The sandy loam and clay loam soils were compared to the rest of the treatments, while the Sg treatment at the same temperature recorded 8.79 and 22.62 mmol S L⁻¹, respectively. The reason may be due to the availability of a suitable biological environment to increase sulfur oxidation due to the good properties of agricultural sulfur compared to the sulfur associated with the gas natural. And Figure 1 and Figure 2 the optimum temperature for the activity of sulfur-oxidizing microorganisms [9].

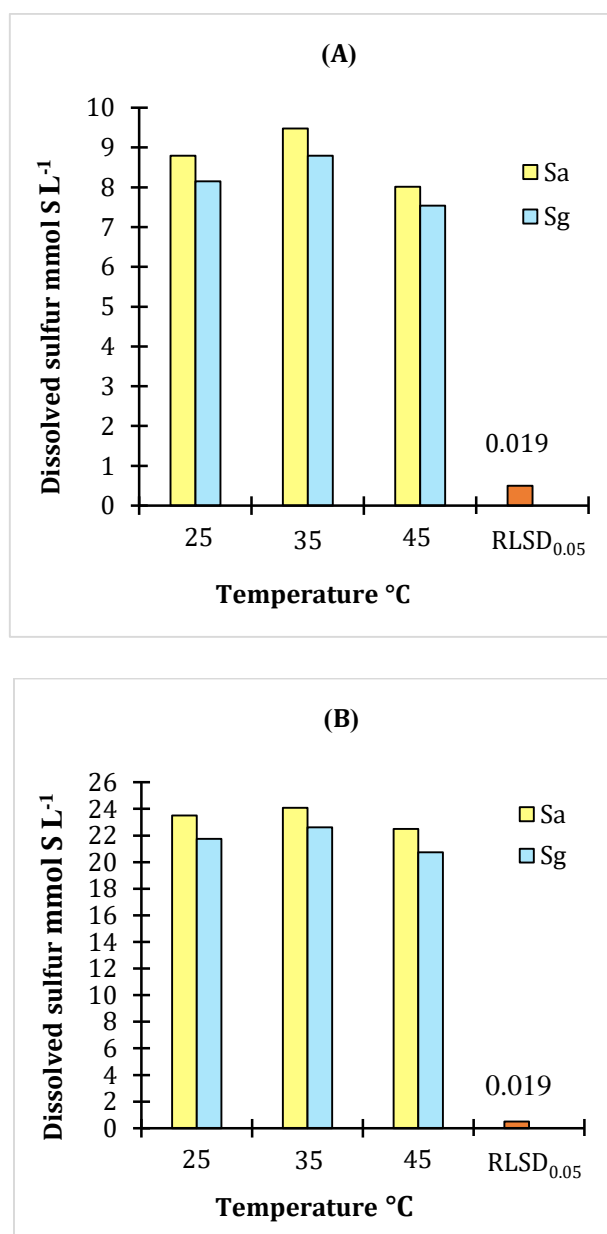


Figure 6. The Effect of the Binary Interaction Between the Sulfur Source and Temperature on the Rate of Dissolved Sulfur in the Soil A) Sandy Loam B) Clay Loam

The results of the binary interaction of the sulfur source and incubation duration showed that there was a significant increase in the concentration of dissolved sulfur with increasing incubation duration for

both fertilizer sources and soils [Figure 7](#). Agricultural sulfur (Sa) was superior in dissolved quantity to the sulfur associated with the gas at all incubation durations. The percentage increase is 3.44% and 8.47% for sandy loam and clay loam soils, respectively, after an incubation period of 120 days between the two fertilizer sources.

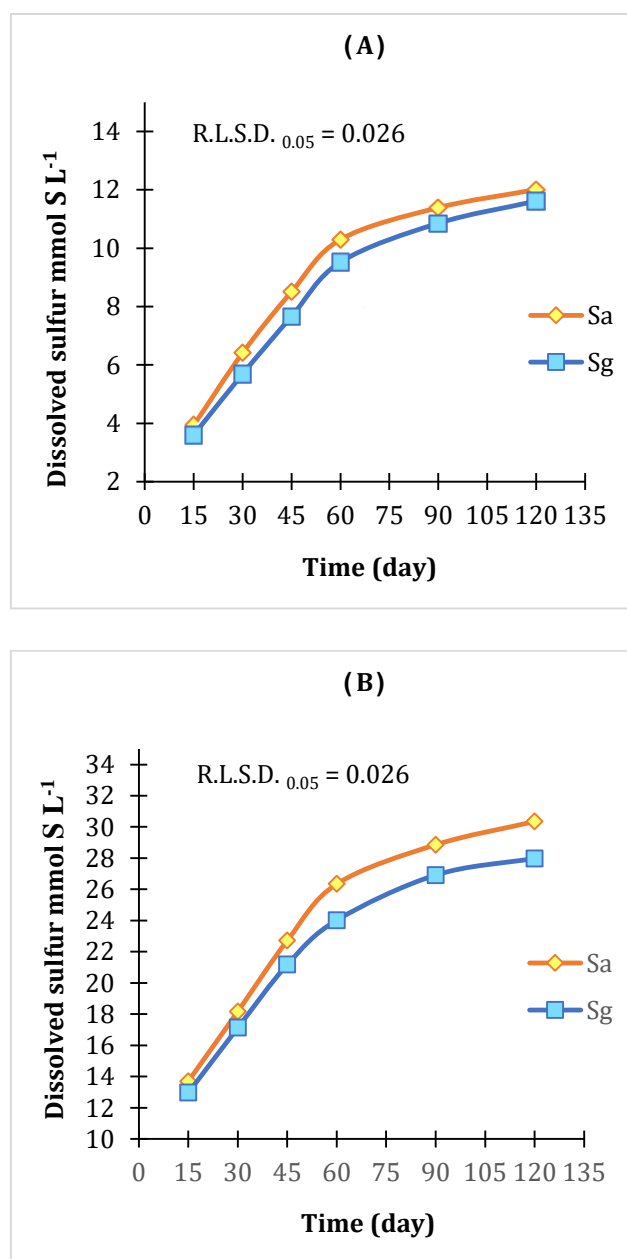


Figure 7. The Effect of the Binary Interaction Between the Source of Sulfur and the Duration of Incubation on the Rate of Dissolved Sulfur in The Soil A) Sandy Loam B) Clay Loam

[Figure 8](#) shows a case of binary interaction of temperature and incubation duration in the dissolved amount of sulfur. The concentration of dissolved sulfur increased with increasing incubation duration in both soils, with statistical differences at the level of 0.05, and the concentrations of dissolved sulfur reached 12.40, 11.90, and 11.12 mmol S L⁻¹ in the soil. Sandy loam and 30.23, 29.32, and 27.94 mmol S L⁻¹ in clay loam soil after 120 days of incubation at temperatures of 25, 35, and 45 °C, respectively. There is also a variation in the effect of temperature on dissolved sulfur, as the temperatures took the following sequence in increasing the release of sulfur and thus increasing its solubility in the solution: 35 > 25 > 45 °C. This leads to a cumulative increase in the oxidized amount of sulfur fertilizer with increasing time, as well as the

optimum temperature of the activity of sulfur-oxidizing organisms [16], [17] and thus its reflection on the sulfur dissolved in the soil solution [18].

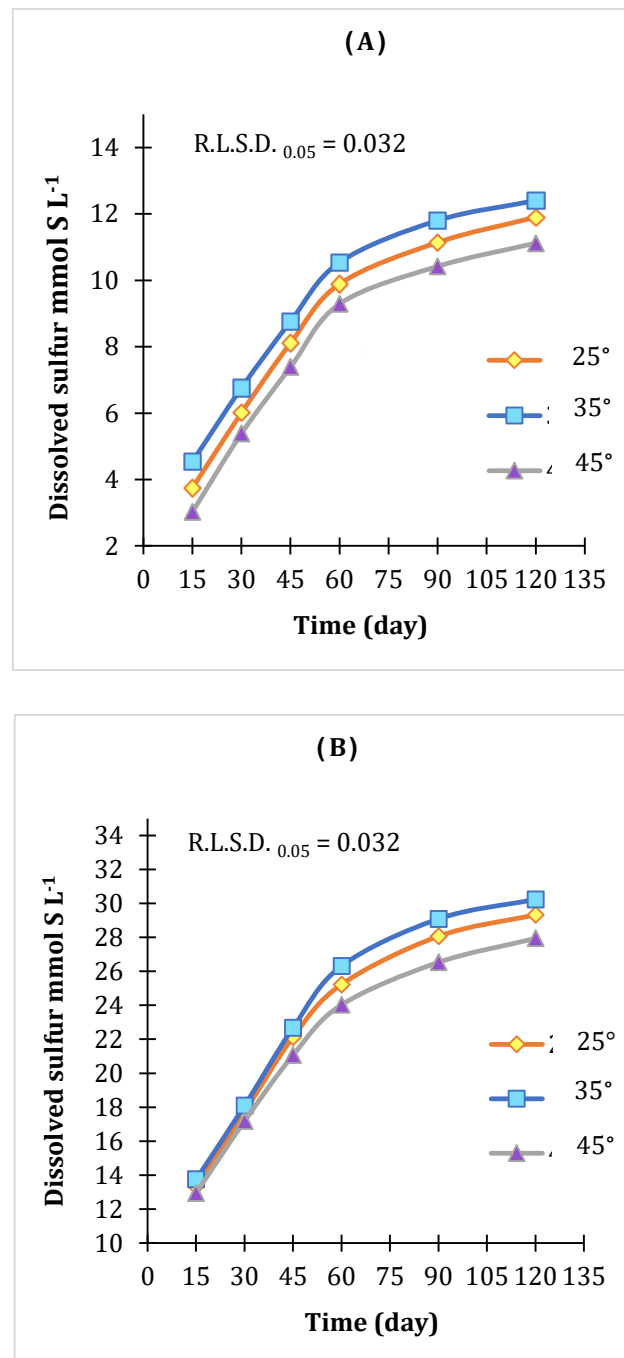


Figure 8. The Effect of the Binary Interaction Between Temperature and Incubation Duration on the Rate of Dissolved Sulfur in the Soil: A) Sandy Loam B) Clay Loam

Acknowledgments

The authors have no specific acknowledgments to make for this research.

Funding Information

This research received no specific grant from any funding agency in the public, commercial, or not-for-profit sectors.

Author Contributions Statement

Name of Author	C	M	So	Va	Fo	I	R	D	O	E	Vi	Su	P	Fu
Musadaq Ali Yaqoob Al-Jasim	✓	✓	✓	✓		✓		✓	✓	✓	✓			
Mohammad Malik Yassin	✓		✓	✓	✓		✓	✓	✓	✓	✓	✓		✓
Rashad Adel Omran		✓	✓	✓	✓	✓	✓	✓	✓		✓	✓	✓	✓

C : Conceptualization

M : Methodology

So : Software

Va : Validation

Fo : Formal analysis

I : Investigation

R : Resources

D : Data Curation

O : Writing - Original Draft

E : Writing - Review & Editing

Vi : Visualization

Su : Supervision

P : Project administration

Fu : Funding acquisition

Conflict of Interest Statement

The authors declare that there are no conflicts of interest regarding the publication of this paper.

Informed Consent

All participants were informed about the purpose of the study and their voluntary consent was obtained prior to data collection.

Ethical Approval

The study was conducted in compliance with the ethical principles outlined in the Declaration of Helsinki and approved by the relevant institutional authorities.

Data Availability

The data that support the findings of this study are available from the corresponding author upon reasonable request.

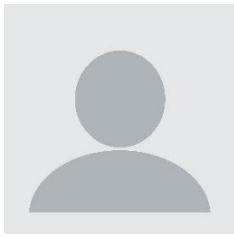
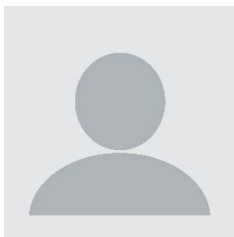
REFERENCES

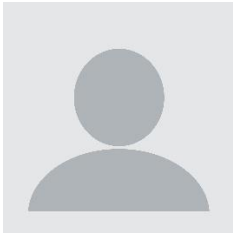
- [1] Parakhia, D.V.; Parmar, K.B.; Vekaria, L.C.; Bunsu, P.B. and Donga, S.J., (2016). Effect of various sulfur levels on soybean dry matter, yield, and yield attributes [Glycine max (L.) varieties]. The Ecoscan. 10(1and2): 51-54.
- [2] F. A. Degryse, R. Babasola, and M. J. Baird Da Silva, 'Oxidation of Elemental Sulfur in Granular Fertilizers Depends on the Soil-Exposed Surface Area', Soil Science Society of America Journal, vol. 80, 2016. doi.org/10.2136/sssaj2015.06.0237
- [3] F. Rossini, E. Maria, and F. S. Provenzano, 'Synergistic Effect of Sulfur and Nitrogen in the Organic and Mineral Fertilization of Durum Wheat: Grain Yield and Quality Traits in the Mediterranean Environment', Agronomy, vol. 8, no. 9, 2018. doi.org/10.3390/agronomy8090189
- [4] O. P. Narayan, P. Kumar, B. Yadav, M. Dua, and A. K. Johri, 'Sulfur nutrition and its role in plant growth and development', Plant Signal. Behav., vol. 18, no. 1, p. 2030082, Dec. 2023. doi.org/10.1080/15592324.2022.2030082
- [5] M. J. Hassan and G. A. Zarraq, 'Mining Evaluation of Sulfur Deposits in Al-Mishraq Area Using Geostatistical Method', Tikrit Journal of Pure Science, vol. 27, no. 1, pp. 41-49, 2022. doi.org/10.25130/tjps.v27i1.81
- [6] Jackson, M. L., (1958). Soil chemical analysis. Prentic-Hall Inc. Englewood, Cliffs N.J.
- [7] G. Kulczycki, 'The effect of elemental sulfur fertilization on plant yields and soil properties', pp. 105-181, 2021. doi.org/10.1016/bs.agron.2020.12.003
- [8] C. Zhao, J. Wang, F. Zang, W. Tang, G. Dong, and Z. Nan, 'Both water content and sulfur-oxidizing bacterial community affect elemental sulfur oxidation in soils with different textures', SSRN Electron. J., 2022. doi.org/10.2139/ssrn.4029206

- [9] E. D. Solberg, S. S. Malhi, M. Nyborg, and K. S. Gill, 'Temperature, soil moisture, and antecedent sulfur application effects on recovery of elemental sulfur as SO₄-S in incubated soils', *Commun. Soil Sci. Plant Anal.*, vol. 36, no. 7-8, pp. 863-874, Apr. 2005. doi.org/10.1081/CSS-200049466
- [10] F. Degryse et al., 'Sulfur uptake from fertilizer fortified with sulfate and elemental S in three contrasting climatic zones', *Agronomy (Basel)*, vol. 10, no. 7, p. 1035, July 2020. doi.org/10.3390/agronomy10071035
- [11] W. Nehb and K. Vydra, 'Sulfur', *Ullmann's Encyclopedia of Industrial Chemistry*. Wiley, Weinheim, Germany, 15-Dec-2006. doi.org/10.1002/14356007.a25_507.pub2
- [12] Page, A. L.; Miller, R. H. and Keeney, D. R., (1982). *Methods of soil analysis Part 2*. 2nd. Ed. ASA. Inc. Madison, Wisconsin, U.S.A.
- [13] Black, C. A., (1965). *Methods of soil analysis. Part I: physical properties*, Am. Soc Agron. Inc. Pub. Madison, Wisconsin, U.S.A.
- [14] L. A. Richards, *Diagnosis and improvement of saline and alkali Soils Agric. Handbook No. 60*. 1954. doi.org/10.1097/00010694-195408000-00012
- [15] F. Degryse, R. Da Silva, and M. J. Baird, 'Effect of Cogranulation on Oxidation of Elemental Sulfur: Theoretical Model and Experimental Validation', *Soil Science Society of America Journal*, 2016. doi.org/10.2136/sssaj2016.02.0054
- [16] Montjabi, N.E.; Faydian, M.; Daoudi, M.H.; Akbar S. and S. Mehdi, (2019). Different humidity and temperature conditions affect sulfur oxidation and nutrient concentration in soil. *Applied Soil Research*, 6(4): 133-145. SID. <https://sid.ir/paper/261834/fa>
- [17] M. Kumar, M. T. Zeyad, P. Choudhary, S. Paul, H. Chakdar, and M. V. S. Rajawat, 'Thiobacillus', *Thiobacillus*. In *Beneficial Microbes in Agro-Ecology*, pp. 545-557, 2020. doi.org/10.1016/B978-0-12-823414-3.00026-5
- [18] Z.-H. Yang, K. Stöven, S. Haneklaus, B. R. Singh, and E. Schnug, 'Elemental sulfur oxidation by Thiobacillus spp. And aerobic heterotrophic sulfur-oxidizing bacteria', *Pedosphere*, vol. 20, no. 1, pp. 71-79, Feb. 2010. [doi.org/10.1016/S1002-0160\(09\)60284-8](https://doi.org/10.1016/S1002-0160(09)60284-8)

How to Cite: Musadaq Ali Yaqoob Al-Jasim, Mohammad Malik Yassin, Rashad Adel Omran. (2024). Study of the release of agricultural sulfur and sulfur associated with natural gas under the influence of different temperatures, incubation times and soil texture, *International Journal of Agriculture and Animal Production (IJAAP)*, 4(1), 22-33. <https://doi.org/10.55529/ijaap.41.24.33>

BIOGRAPHIES OF AUTHORS

	<p>Musadaq Ali Yaqoob Al-Jasim, seems affiliated with the Department of Soil Sciences and Water Resources, College of Agriculture at the University of Basrah , Iraq. In his work, he mostly leans toward soil fertility stuff, sulfur nutrition, soil chemistry, sustainable agriculture, and nutrient handling especially in arid and semi-arid lands. He also took part in investigations aiming at better soil productivity and stronger crop performance, even when the weather or environmental circumstances change, sort of different contexts. Email: musadaqwrood@gmail.com</p>
	<p>Mohammad Malik Yassin, is basically a faculty member/researcher in the Department of Soil Sciences and Water Resources, College of Agriculture, University of Basrah, Iraq. His academic focus is soil science, water resource management, soil amendments, and environmental sustainability within farming systems. He has been involved in a few research campaigns connected to soil characteristics, and nutrient movement too, you could say dynamics over time.</p>



Rashad Adel Omran, is linked to the Department of Soil Sciences and Water Resources, College of Agriculture, University of Basrah, Iraq. His interests go around soil and water management, plant nutrition, environmental soil science, plus sustainable agricultural practices. His research supports raising agricultural yields while using natural resources in a more efficient manner, not just for the short term but in a practical way.